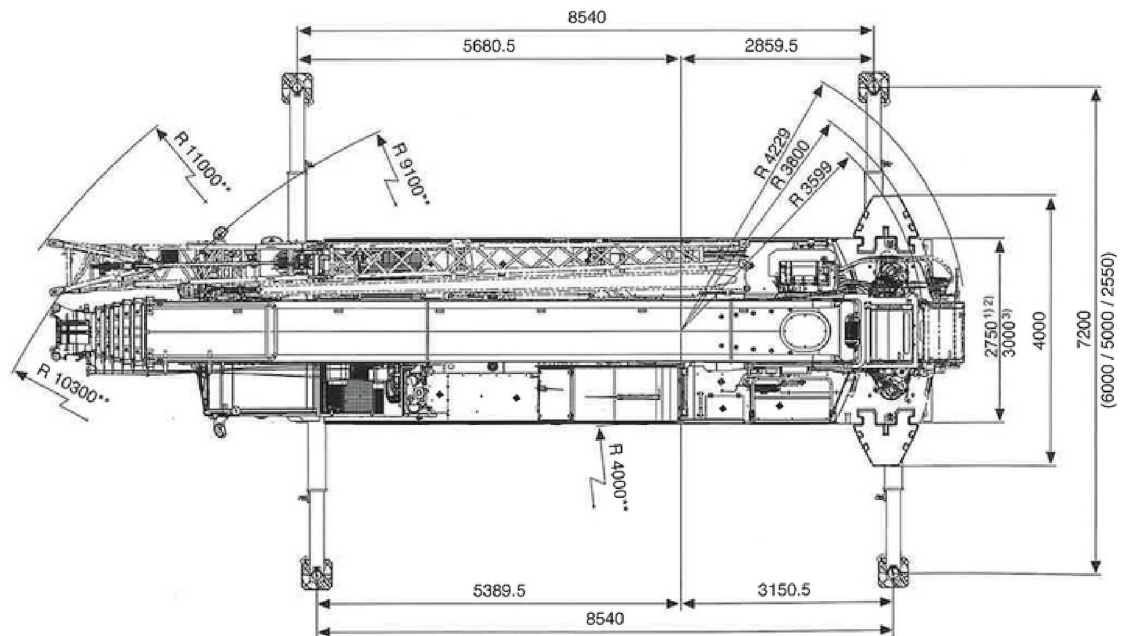
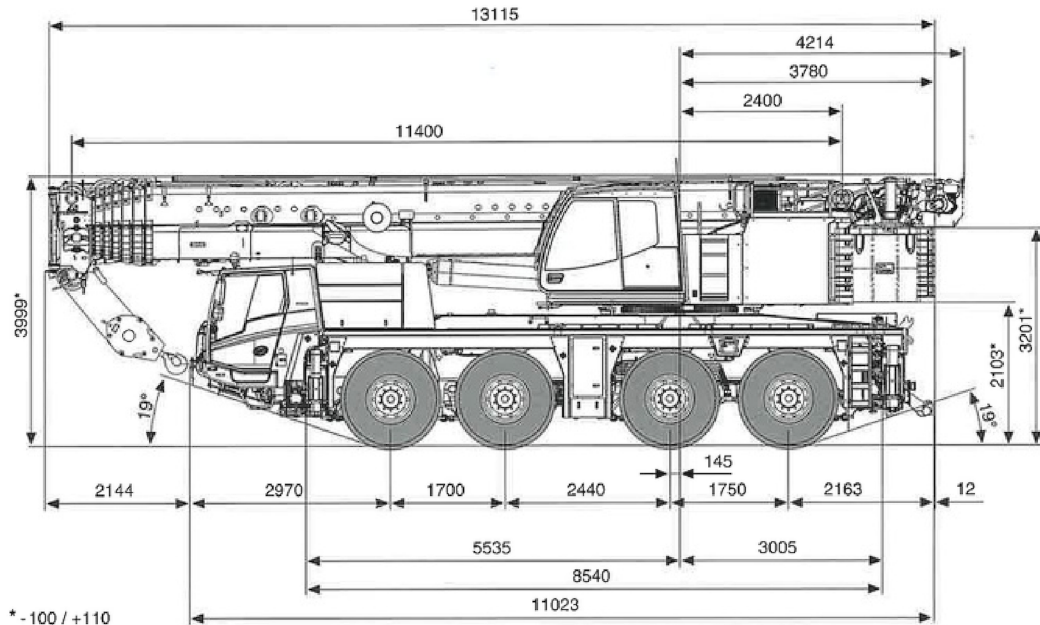


TADANO ATF-100-4.1

mit 2. Winde
Ballast – Transport mit LKW

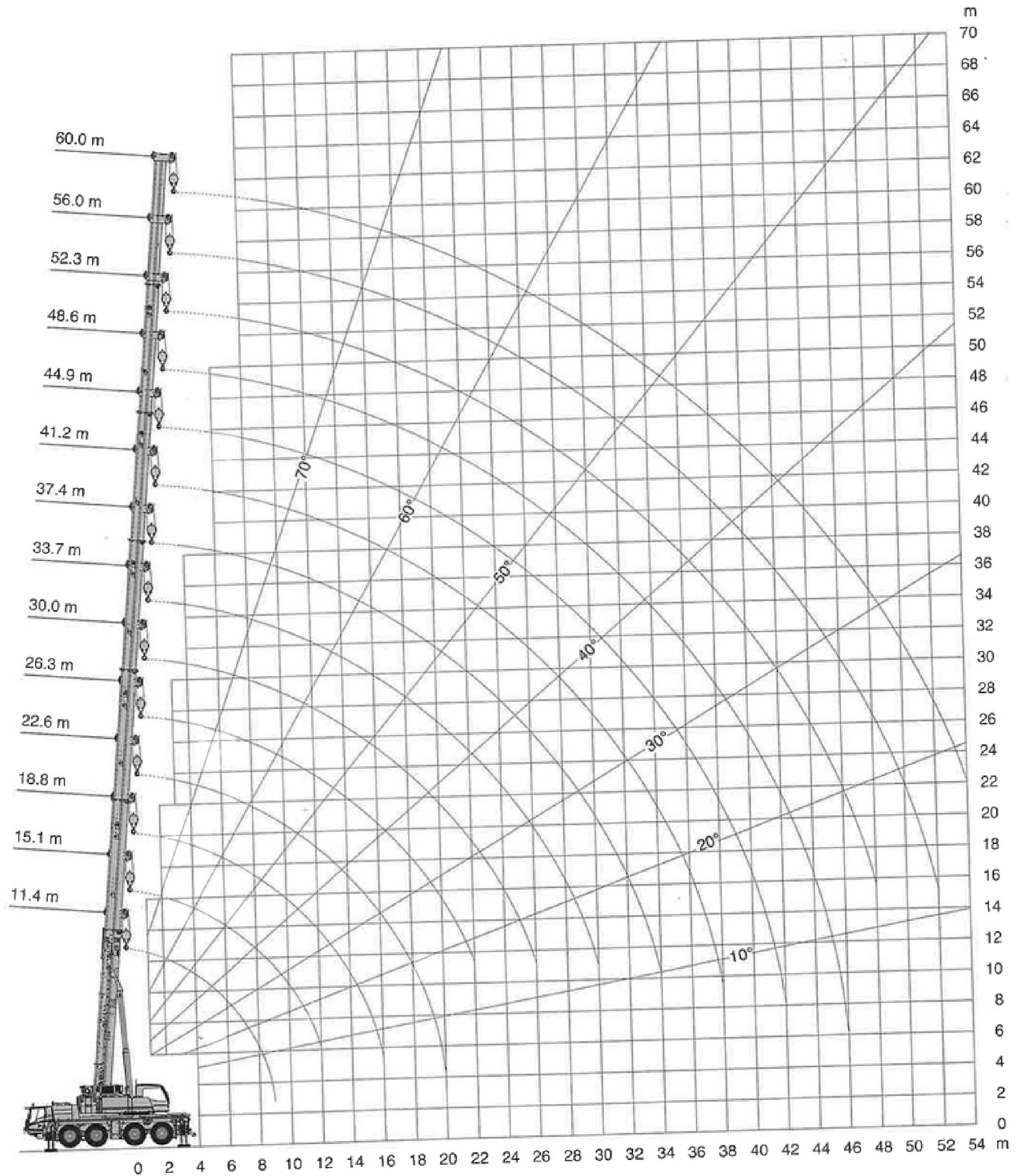


¹⁾ 385/95 R 25 (14.00 R 25)
²⁾ 445/95 R 25 (16.00 R 25)
³⁾ 525/80 R 25 (20.5 R 25)

TADANO ATF-100-4.1

mit 2. Winde

Ballast – Transport mit LKW



KRAN-MITTERHAUSER GmbH

07764/7291

TADANO ATF-100-4.1

mit 2. Winde

Ballast – Transport mit LKW



m	11.4 m*	11.4 m	15.1 m	18.8 m	22.6 m	26.3 m	30.0 m	33.7 m	37.4 m	41.2 m	44.9 m	48.6 m	52.3 m	56.0 m	60.0 m
2.5	100.0 **	82.7	63.5	63.5	59.7	46.3	36.9								
3.0	89.7	74.8	63.5	63.5	59.7	46.3	36.9	29.3							
3.5	84.4	68.2	63.5	63.5	59.7	46.3	36.9	29.3	23.7						
4.0	79.6	62.4	62.1	61.8	59.6	46.3	36.9	29.3	23.8						
4.5	72.4	57.5	57.5	57.4	57.0	46.3	36.9	29.3	23.8	19.1					
5.0	64.8	53.2	53.2	53.6	53.4	46.3	36.9	29.3	23.8	19.1	15.9				
6.0	53.3	46.0	46.0	46.4	46.2	45.2	36.9	29.3	23.8	19.1	16.0	12.5			
7.0	45.1	40.3	40.3	40.7	40.5	40.2	34.6	29.3	23.8	19.1	16.0	12.5	10.3		
8.0	38.8	35.7	35.7	36.6	36.6	36.4	34.4	28.6	23.8	19.1	16.0	12.5	10.3	8.4	
9.0	34.0	31.9	31.9	32.8	32.8	32.6	32.2	27.7	23.7	19.1	16.0	12.5	10.3	8.4	7.3
10.0			28.7	29.7	29.6	29.4	29.0	27.5	22.7	19.1	16.0	12.5	10.3	8.4	7.3
11.0			26.0	26.9	26.9	26.6	26.2	26.1	21.9	19.1	16.0	12.5	10.3	8.4	7.3
12.0			24.1	24.4	24.4	24.1	23.7	24.0	21.9	18.2	16.0	12.5	10.3	8.4	7.3
14.0				20.4	20.4	20.1	20.6	19.7	19.0	17.7	15.0	12.5	10.3	8.4	7.3
16.0				16.7	16.6	17.3	16.9	16.5	15.9	15.5	14.6	12.3	10.3	8.4	7.3
18.0					14.5	14.4	14.0	14.0	13.6	13.2	13.3	11.3	10.3	8.4	7.3
20.0					12.4	12.2	11.9	11.8	11.4	11.9	11.5	11.2	9.6	8.4	7.3
22.0						10.4	10.1	10.3	10.5	10.4	9.9	9.9	9.2	8.4	7.3
24.0							8.7	9.2	9.1	9.0	8.8	8.7	8.8	7.8	7.2
26.0							7.6	8.0	8.0	7.8	8.0	7.9	7.6	7.2	6.8
28.0								7.0	7.0	7.1	7.2	6.9	6.6	6.2	6.2
30.0								6.2	6.2	6.5	6.3	6.0	5.8	5.4	5.4
32.0									5.5	5.8	5.6	5.3	5.1	4.7	4.7
34.0									4.9	5.1	5.0	4.7	4.4	4.1	4.0
36.0										4.6	4.4	4.1	3.9	3.5	3.5
38.0										4.1	4.0	3.7	3.4	3.0	3.0
40.0											3.5	3.2	3.0	2.6	2.6
42.0											3.2	2.8	2.6	2.2	2.2
44.0												2.5	2.2	1.9	1.8
46.0												2.2	1.9	1.6	1.5
48.0													1.7	1.3	1.2
50.0														1.0	1.0
52.0														0.8	0.8
54.0															0.5